



Register Office  
**MADHURAM OVERSEAS**  
4192-1<sup>st</sup> Road, GIDC Phase III,  
Jamnagar-361004, Gujarat (INDIA).  
E : info@madhuramoverseas.com

Sales Office  
**MADHURAM METALCRAFT**  
Plot No. 3489, 1<sup>st</sup> Road, Phase III, GIDC Dared,  
Jamnagar-361004, Gujarat (INDIA)  
☎ : +91 98291 56789 E : sales@madhuramoverseas.com



[www.madhuramoverseas.com](http://www.madhuramoverseas.com)

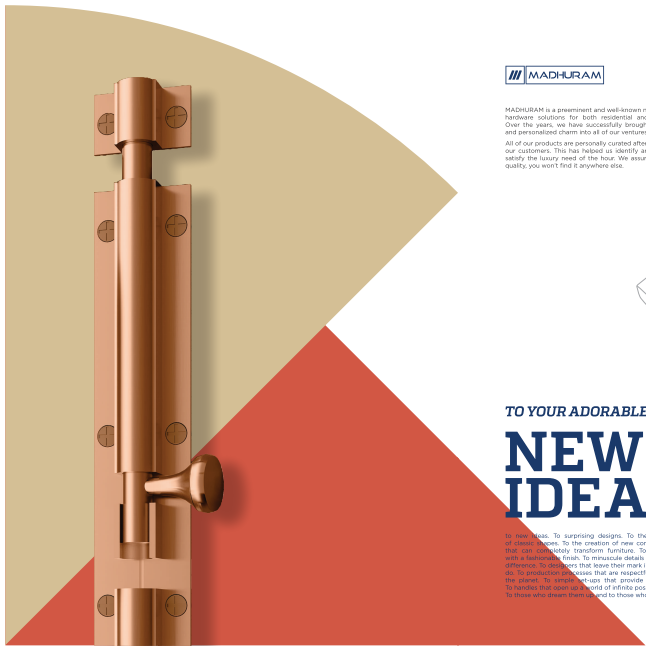


# YES YOU CAN

DESIGN YOUR SPACE WITH

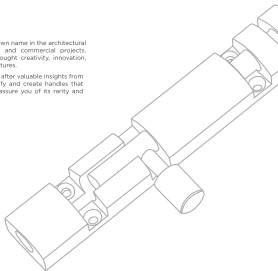
INNOVATIVE  
CREATIVE  
LUXURIOUS  
ARTISTIC  
FUTURISTIC  
PRODUCTS





MADHURAM is a prominent and well-known name in the architectural hardware solutions for both residential and commercial projects. Over the years, we have successfully brought creativity, innovation, and personalized charm into all of our ventures.

All of our products are personally curated after valuable insights from our customers. This has helped us identify and create handles that satisfy the luxury need of the hour. We assure you of its rarity and quality, you won't find it anywhere else.



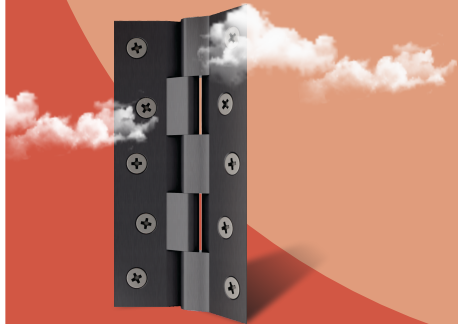
TO YOUR ADORABLE LIVING

# NEW IDEAS

To new ideas. To surprising designs. To the modern reinvention of classic styles. To the creation of new concepts. To accessories that can completely transform furniture. To innovative materials with a sustainable touch. To intricate details that can make a huge difference. To designers that leave their mark in everything that they do. To production processes that are respectful to both people and the planet. To simple solutions that provide sophisticated results. To handle the sophisticated needs of prime possibilities in decoration. To those who dream them up and to those who create them.

TO YOUR ADORABLE LIVING

# UP IN THE SKY



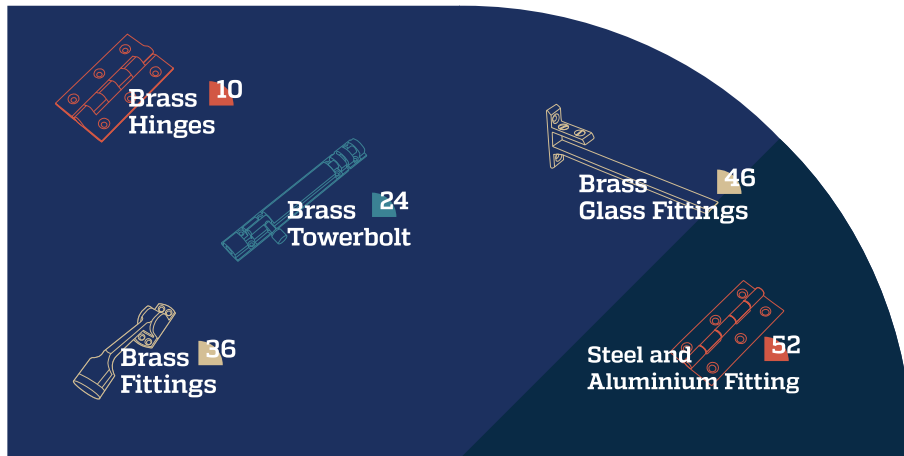
## CREATIVE MOMENTS






Everything starts with an artistic phase, the moment in which the imagination is released and new forms are created, which define new trends. For contemporary handles, the designer is inspired by the architecture that surrounds him. Whilst for other handles they draw their inspiration from the most important ongoing artistic trends, to create something out of the box. Thus, maintaining the originality and authenticity of each product.

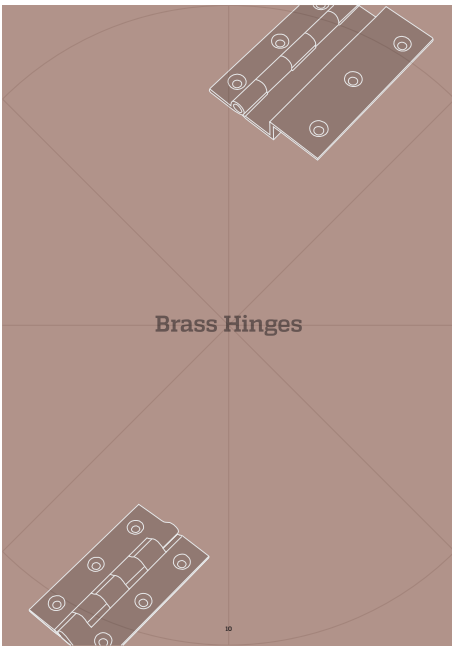


All of our products satisfy various criteria for its functioning for the consumer. Our customers care about the aesthetics of the products used in their space and their needs are our priority. Treated quality and incorporating features that contain the capacity to meet all consumer requirements is what makes us a trusted name in the industry. All our products perform their tasks easily in a complete and effective way.

# Content



 Brass Hinges <b>10</b>	 Brass Towerbolt <b>24</b>	 Brass Glass Fittings <b>46</b>
 Brass Fittings <b>36</b>	 Steel and Aluminium Fitting <b>52</b>	





### BRASS HINGES BUTT

#### THICKNESS 3/32

CODE No.	SIZE MM	SIZE INCHES	MRP \$S/ARM	MRP Z.BLACK	MRP PVD	PCS / BOX	PCS / CASE	SCREW SIZE
AB01	75x16-16	3X3/8X5/8	152	20	240	6x15		
AB02	75x16-16	3X3/8X5/8	177	20	240	6x15		
AB03	75x12-19	3X1/2X3/4	185	20	240	6x15		
AB04	75x19-19	3X3/8X3/4	207	20	240	6x15		
AB07	75x12-21	3X1/2X21	207	20	240	6x15		
AB08	75x14-25	3x1x41	232	20	240	6x15		
AB09	75x21-25	3x1x1	249	20	240	6x15		
AB10	75x12-38	3x1/2x1.1/2	254	20	240	6x15		
AB11	75x14-38	3x3/8x1.1/2	276	20	240	6x15		
AB12	100x9-16	4x3/8x5/8	204	20	240	6x15		
AB13	100x16-16	4x5/8x5/8	235	20	240	6x15		
AB14	100x19-19	4X3/8X3/4	249	20	240	6x15		
AB15	100x19-19	4X3/8X3/4	276	20	240	6x15		
AB18	100x19-25	4X1/2X1	278	20	240	6x15		
AB19	100x19-25	4x3/4x1	307	20	240	6x15		
AB20	100x25-25	4x1x1	334	20	240	6x15		
AB21	100x19-38	4x1/2x1.1/2	337	20	240	6x15		
AB22	100x19-38	4x3/4x1.1/2	367	20	240	6x15		

### BRASS HINGES RAILWAY

#### THICKNESS 3/32

CODE No.	SIZE MM	SIZE INCHES	MRP \$S/ARM	MRP PVD	PCS / BOX	PCS / CASE	SCREW SIZE
BR01	75x19-19	3x3/4x3/4	204	20	240	6x15	



DESIGNED TO GIVE YOUR DOOR A SMOOTH, SOFT, AND EASY MOVEMENT SUITABLE FOR ALL WEATHER CONDITIONS.

### BRASS RLY HINGES LOCKING

#### THICKNESS 1/8

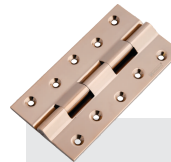
CODE No.	SIZE MM	SIZE INCHES	MRP \$S/ARM	MRP Z.BLACK	MRP PVD	PCS / BOX	PCS / CASE	SCREW SIZE
IR01	75x20-22	3x3/8x7/8	306	327	574	10	240	7x10
IR02	75x25-25	3x1x1	330	386	611	10	240	7x10
IR04	100x22-22	4x2/8x7/8	405	433	762	10	160	7x10
IR05	100x25-25	3x1x1	478	511	839	5	80	7x10
IR06	100x26x18	4x1.5/8x1.1/8	522	550	885	5	80	7x10
IR07	125x25x25	3x1x1	598	640	1049	5	60	7x10
IR08	125x28x28	5x1.5/8x1.1/8	653	699	1106	5	60	7x10



**THICKNESS 5/32**

CODE No.	SIZE MM	SIZE INCHES	MRP SS/ARM Z.BLACK	MRP PVD	MRP PCS/ BOX	PCS/ CASE	SCREW SIZE
IR11	75x28x08	3x1.1/8x1.1/8	444	475	710	10	B-30
IR12	75x31x31	3x1.1/4x1.1/4	475	509	751	10	B-30
IR13	100x28x08	4x1x1	540	467	931	5	B-30
IR14	100x28x08	4x1.1/8x1.1/8	627	671	964	5	B-30
IR15	100x31x31	4x1.1/4x1.1/4	679	727	1049	5	B-30
IR16	125x28x08	5x1x1	700	737	1163	5	B-30
IR17	125x28x08	5x1.1/8x1.1/8	784	839	1243	5	B-30
IR18	125x31x31	5x1.1/4x1.1/4	849	908	1311	5	B-30
IR19	150x28x08	6x1.1/8x1.1/8	990	1056	1615	5	B-30
IR20	150x31x31	6x1.1/4x1.1/4	1019	1090	1573	5	B-30

**BRASS RLY HINGES LOCKING**



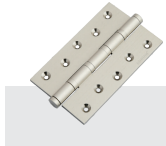
**THICKNESS 3/16**

CODE No.	SIZE MM	SIZE INCHES	MRP SS/ARM Z.BLACK	MRP PVD	MRP PCS/ BOX	PCS/ CASE	SCREW SIZE
IR28	100x38x08	4x1.1/2x1.1/2	1045	1119	1469	5	B-35
IR29	125x31x31	5x1.1/4x1.1/4	1066	1160	1537	5	B-35
IR30	125x38x08	5x1.1/2x1.1/2	1308	1400	1755	5	B-35
IR34	150x38x08	6x1x1	1382	1703	2191	5	B-35
IR31	150x31x31	6x1.1/4x1.1/4	1300	1376	1865	5	B-35
IR32	150x38x08	6x1.1/2x1.1/2	1568	1678	2104	5	B-35
IR32	150x38x08	6x2x2	1914	2047	2524	5	B-35
IR33	200x31x31	8x1.1/4x1.1/4	1753	1876	2462	5	B-35
IR34	200x38x08	8x1.1/2x1.1/2	2091	2237	2896	5	B-35
IR35	200x38x08	8x2x2	2362	2742	3377	5	B-35
IR35	250x38x08	10x1.1/2x1.1/2	3972	4250	4845	3	24 B-35
IR36	250x38x08	10x2x2	4137	4427	5195	3	24 B-35
IR37	300x38x08	12x2x2	5190	5489	6896	3	24 B-35





### BRASS HINGES BEARING



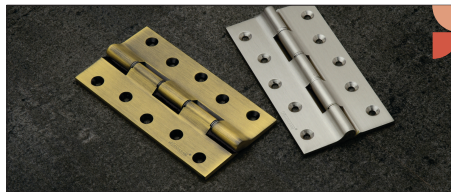
CODE No.	SIZE MM	SIZE INCHES	MRP \$\$/ARM	PCS / BOX	PCS / CASE	SCREW SIZE
<b>3MM</b>						
JB01	75x50x2	3x2x2.5	317	20	240	B30
JB02	100x75	4x3	472	5	60	B30
JB03	125x75	5x3	850	5	60	B30
<b>4MM</b>						
JB05	100x75	4x3	829	5	80	B30
JB06	125x75	5x3	1400	5	60	B30
JB07	150x75	6x3	1254	5	50	B30
<b>5MM</b>						
JB13	125x88	5x3 1/2	1536	5	60	10x35
JB14	150x88	6x3 1/2	1847	5	50	10x35
JB15	200x88	8x3 1/2	2832	5	30	10x35
JB16	250x88	10x3 1/2	3689	3	24	10x35
JB17	300x88	12x3 1/2	5105	3	24	10x35
JB18	125x100	5x4	4938	5	60	10x35
JB19	150x100	6x4	1888	5	50	10x35
JB20	200x100	8x4	3101	5	30	10x35
JB22	300x100	12x4	5101	3	24	10x35
JB27	300x125	12x5	6566	3	24	10x35



### BRASS HINGES BEARING ITALIAN TIP



CODE No.	SIZE MM	SIZE INCHES	MRP \$\$/ARM	PCS / BOX	PCS / CASE	SCREW SIZE
<b>3MM</b>						
JB32	75x50x2	3x2x2.5	377	20	240	B30
JB33	100x75	4x3	743	5	60	B30
JB34	125x75	5x3	919	5	60	B30
<b>4MM</b>						
JB36	100x75	4x3	898	5	80	B30
JB37	125x75	5x3	1112	5	60	B30
JB38	150x75	6x3	1324	5	50	B30
<b>5MM</b>						
JB44	125x88	5x3 1/2	1616	5	60	10x35
JB45	150x88	6x3 1/2	1930	5	50	10x35
JB46	200x88	8x3 1/2	2862	5	30	10x35
JB47	250x88	10x3 1/2	3809	3	24	10x35
JB48	300x88	12x3 1/2	4616	3	24	10x35
JB49	125x100	5x4	1958	5	60	10x35
JB50	150x100	6x4	2206	5	50	10x35
JB51	200x100	8x4	3514	5	30	10x35
JB52	300x100	12x4	5558	3	24	10x35
JB58	300x125	12x5	6617	3	24	10x35



### THICKNESS 1/8"

CODE No.	SIZE MM	SIZE INCHES	MRP \$\$/ARM	PCS / BOX	PCS / CASE	SCREW SIZE
BR39	75x50x2	3x1/4	375	20	240	7x30
BR41	100x25x2	4x1/4	402	5	60	7x30
BR42	100x28x28	4x1.18x1.18	537	5	60	7x30
BR43	125x25x2	5x1/4	415	5	60	7x30
BR44	125x28x28	5x1.18x1.18	672	5	60	7x30

### BRASS RLY HINGES WASHER

### THICKNESS 5/32"

CODE No.	SIZE MM	SIZE INCHES	MRP \$\$/ARM	PCS / BOX	PCS / CASE	SCREW SIZE
BR49	100x25x2	4x1/4	383	5	60	B30
BR50	100x28x28	4x1.18x1.18	645	5	60	B30
BR51	100x11x31	4x1.14x1.14	699	5	60	B30
BR52	125x25x2	5x1/4	728	5	60	B30
BR53	125x28x28	5x1.18x1.18	806	5	60	B30
BR54	125x11x31	5x1.14x1.14	873	5	60	B30
BR55	150x25x2	6x1.18x1.18	967	5	50	B30
BR56	150x11x31	6x1.14x1.14	1048	5	50	B30

### THICKNESS 3/16"

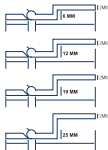
CODE No.	SIZE MM	SIZE INCHES	MRP \$\$/ARM	PCS / BOX	PCS / CASE	SCREW SIZE
BR64	100x28x28	4x1.12x1.12	1075	5	60	B35
BR65	125x11x31	5x1.04x1.04	1096	5	60	B35
BR66	125x28x28	5x1.12x1.12	1345	5	60	B35
BR115	125x50x50	5x2	1637	5	40	B35
BR127	150x11x31	6x1.04x1.04	1337	5	50	B35
BR68	150x28x28	6x1.12x1.12	1613	5	50	B35
BR116	150x50x50	6x2	1968	5	30	B35
BR129	200x11x31	8x1.04x1.04	1841	5	30	B35
BR170	200x28x28	8x1.12x1.12	2187	5	30	B35
BR177	200x50x50	8x2	2636	5	20	B35



EXPERIENCE THE REAL STRENGTH



**BRASS HINGES  
L - LOCKING**



THICKNESS 2 MM

CODE No.	SIZE MM	SIZE INCHES	MRP ₹	PCS / BOX	PCS / CASE	SCREW SIZE
<b>6MM</b>						
CL77	75x9	3x3/8	243	10	200	6x15
CL79	75x12	3x1/2	276	10	200	6x15
CL80	75x19	3x3/4	345	10	200	6x15
CL81	75x25	3x1	391	10	200	6x15
CL81	100x9	4x3/8	323	10	200	6x15
CL85	100x12	4x1/2	367	10	200	6x15
CL86	100x19	4x3/4	461	10	200	6x15
CL87	100x25	4x1	516	10	200	6x15
<b>12MM</b>						
CL89	75x9	3x3/8	280	10	200	6x15
CL91	75x12	3x1/2	322	10	200	6x15
CL92	75x19	3x3/4	387	10	200	6x15
CL93	75x25	3x1	453	10	200	6x15
CL95	100x9	4x3/8	372	10	200	6x15
CL97	100x12	4x1/2	428	10	200	6x15
CL98	100x19	4x3/4	487	10	200	6x15
CL99	100x25	4x1	562	10	200	6x15
<b>18MM</b>						
CL101	75x9	3x3/8	302	10	200	6x15
CL103	75x12	3x1/2	344	10	200	6x15
CL104	75x19	3x3/4	389	10	200	6x15
CL107	75x25	3x1	467	10	200	6x15
CL107	100x9	4x3/8	403	10	200	6x15
CL109	100x12	4x1/2	459	10	200	6x15
CL110	100x19	4x3/4	521	10	200	6x15
CL111	100x25	4x1	595	10	200	6x15
<b>25MM</b>						
CL114	75x12	3x1/2	392	10	200	6x15
CL115	75x19	3x3/4	443	10	200	6x15
CL116	75x25	3x1	510	10	200	6x15
CL119	100x12	4x1/2	522	10	200	6x15
CL120	100x19	4x3/4	592	10	200	6x15
CL121	100x25	4x1	679	10	200	6x15

THICKNESS 2.5 MM

CODE No.	SIZE MM	SIZE INCHES	MRP ₹	PCS / BOX	PCS / CASE	SCREW SIZE
<b>6MM</b>						
CL47	75x9	3x3/8	262	10	200	6x15
CL48	75x12	3x1/2	288	10	200	6x15
CL49	75x19	3x3/4	332	10	200	6x15
CL50	75x25	3x1	453	10	200	6x15
CL51	100x9	4x3/8	333	10	200	6x15
CL52	100x12	4x1/2	390	10	200	6x15
CL53	100x19	4x3/4	519	10	200	6x15
CL54	100x25	4x1	605	10	200	6x15
<b>12MM</b>						
CL55	75x9	3x3/8	325	10	200	6x15
CL56	75x12	3x1/2	361	10	200	6x15
CL57	75x19	3x3/4	414	10	200	6x15
CL58	75x25	3x1	482	10	200	6x15
CL59	100x9	4x3/8	434	10	200	6x15
CL60	100x12	4x1/2	481	10	200	6x15
CL61	100x19	4x3/4	590	10	200	6x15
CL62	100x25	4x1	649	10	200	6x15
<b>18MM</b>						
CL63	75x9	3x3/8	355	10	200	6x15
CL64	75x12	3x1/2	397	10	200	6x15
CL65	75x19	3x3/4	442	10	200	6x15
CL66	75x25	3x1	511	10	200	6x15
CL67	100x9	4x3/8	476	10	200	6x15
CL68	100x12	4x1/2	532	10	200	6x15
CL69	100x19	4x3/4	593	10	200	6x15
CL70	100x25	4x1	664	10	200	6x15
<b>25MM</b>						
CL71	75x12	3x1/2	453	10	200	6x15
CL72	75x19	3x3/4	510	10	200	6x15
CL73	75x25	3x1	575	10	200	6x15
CL74	100x12	4x1/2	607	10	200	6x15
CL75	100x19	4x3/4	683	10	200	6x15
CL76	100x25	4x1	769	10	200	6x15

**BRASS HINGES Z**

CODE No.	SIZE MM	SIZE INCHES	MRP ₹	PCS / BOX	PCS / CASE	SCREW SIZE
D201	75x12x12	3x1/2x3MM	310	10	200	6x15
D202	100x12x12	4x1/2x3MM	417	10	200	6x15
D203	75x19x18	3x3/4x3MM	382	10	200	6x15
D204	100x19x18	4x3/4x3MM	482	10	200	6x15
D205	75x24x25	3x1x2.5MM	416	10	200	6x15
D206	100x25x25	4x1x2.5MM	551	10	200	6x15

**BRASS HINGES  
L - LOCK 90°**



LOCK AT 90°





#### BRASS HINGES OVERLAY



CODE No.	SIZE MM	SIZE INCHES	MHP SS	PCS / BOX	PCS / CASE	SCREW SIZE
EW53	19x19	3" (F.U.I)	617	5	60	6x20
EW55	19x19	4" (F.U.I)	850	5	60	6x20
EW57	19x25	3" (F.U.I)	592	5	60	6x20
EW59	19x25	4" (F.U.I)	850	5	60	6x20
EW61	25x25	3" (F.U.I)	806	5	60	6x20
EW63	25x25	4" (F.U.I)	1076	5	60	6x20
EW65	25x19	3" (F.U.I)	806	5	60	6x20
EW67	25x19	4" (F.U.I)	1107	5	60	6x20
EW69	33x25	3" (F.U.I)	1738	5	60	6x20
EW71	33x25	4" (F.U.I)	2328	5	60	6x20



#### BRASS HINGES OVERLAY



CODE No.	SIZE MM	SIZE INCHES	MHP SS	PCS / BOX	PCS / CASE	SCREW SIZE
EW54	19x19	3" (F.U.I)	617	5	60	6x20
EW56	19x19	4" (F.U.I)	850	5	60	6x20
EW58	19x25	3" (F.U.I)	592	5	60	6x20
EW60	19x25	4" (F.U.I)	850	5	60	6x20
EW62	25x25	3" (F.U.I)	806	5	60	6x20
EW64	25x25	4" (F.U.I)	1076	5	60	6x20
EW66	25x19	3" (F.U.I)	806	5	60	6x20
EW68	25x19	4" (F.U.I)	1107	5	60	6x20
EW70	33x25	3" (F.U.I)	1738	5	60	6x20
EW72	33x25	4" (F.U.I)	2328	5	60	6x20



SMOOTH MOVEMENT

**BRASS HINGES  
W - LOCKING**



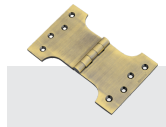
THICKNESS 2 MM

CODE No.	SIZE MM	SIZE INCHES	MBP \$5	PCS / BOX	PCS / CASE	SCREW SIZE
EW01	50 Regular	Regular 2"	284	10	120	6x15
EW02	75 Regular	Regular 3"	511	10	120	6x15
EW04	75x12x5	3x1/2x2mm	196	10	120	6x15
EW05	100x12x6	4x1/2x6mm	528	10	120	6x15
EW06	75x12x12	3x1/2x12mm	421	10	120	6x15
EW07	100x12x12	4x1/2x12mm	560	10	120	6x15
EW08	75x12x19	3x1/2x19mm	444	10	120	6x15
EW09	100x12x19	4x1/2x19mm	594	10	120	6x15
EW10	75x12x25	3x1/2x25mm	511	10	120	6x15
EW11	100x12x25	4x1/2x25mm	680	10	120	6x15
EW12	75x19x3	3x3/4x3mm	447	10	120	6x15
EW13	100x19x6	4x3/4x6mm	597	10	120	6x15
EW14	75x19x12	3x3/4x12mm	456	10	120	6x15
EW15	100x19x12	4x3/4x12mm	609	10	120	6x15
EW16	75x19x19	3x3/4x19mm	482	10	120	6x15
EW17	100x19x19	4x3/4x19mm	641	10	120	6x15
EW18	75x19x25	3x3/4x25mm	549	10	120	6x15
EW19	100x19x25	4x3/4x25mm	730	10	120	6x15
EW20	75x25x3	3x3x6mm	353	10	120	6x15
EW30	75x6x12	3x3/8x12mm	387	10	120	6x15
EW31	75x6x19	3x3/8x19mm	423	10	120	6x15

SMOOTH MOVEMENT



**BRASS HINGES  
PARLEMENT**



CODE No.	SIZE MM	SIZE INCHES	MBP \$5/ABM	PCS / BOX	SCREW SIZE
FP04	100x100	4x4	1474	5	8x10
FP05	100x125	4x5	1710	5	8x10
FP06	125x100	5x4	1428	5	8x10
FP09	125x125	5x5	2064	5	8x10
FP10	125x150	5x6	2300	5	8x10
FP11	125x200	5x8	3090	5	8x10
FP12	125x250	5x10	5317	5	8x10

**BRASS HINGES  
SPRING**



SINGLE ACTION



DOUBLE ACTION

CODE No.	SIZE MM	SIZE INCHES	MBP \$5/ABM	PCS / BOX	PCS / CASE	SCREW SIZE
GS01	Single Action x 100	4"	942	5	80	8x10
GS02	Single Action x 125	5"	1179	5	60	8x10
GS03	Double Action x 100	4"	1566	3	48	8x10
GS04	Double Action x 125	5"	1968	3	36	8x10



**Brass Towerbolt**

BRINGING TO  
LIFE  
A TIMELESS  
CREATION  
THAT IS  
SUFFICED  
WITH  
MODERNITY  
AND  
VERSATILITY



**BRASS TOWER BOLT**  
3/8 (Dia. 9.5 mm)

**ROUND**

CODE No.	SIZE MM	SIZE INCHES	MRP S\$/ABM	PCS/ BOX	PCS/ CASE	SCREW SIZE
MT01	9.5x75	3/8x3	283	10	120	5x20
MT02	9.5x100	3/8x4	379	5	100	5x20
MT03	9.5x150	3/8x6	568	5	60	5x20
MT04	9.5x200	3/8x8	758	5	50	5x20
MT05	9.5x250	3/8x10	947	5	30	5x20
MT06	9.5x300	3/8x12	1137	5	30	5x20



**HEX**

CODE No.	SIZE MM	SIZE INCHES	MRP S\$/ABM	PCS/ BOX	PCS/ CASE	SCREW SIZE
MT08	9.5x75	3/8x3	309	10	120	5x20
MT09	9.5x100	3/8x4	406	5	100	5x20
MT10	9.5x150	3/8x6	600	5	60	5x20
MT11	9.5x200	3/8x8	800	5	50	5x20
MT12	9.5x250	3/8x10	1001	5	30	5x20
MT13	9.5x300	3/8x12	1201	5	30	5x20



**BULLET**

CODE No.	SIZE MM	SIZE INCHES	MRP S\$/ABM	PCS/ BOX	PCS/ CASE	SCREW SIZE
MT17	9.5x100	3/8x4	425	5	100	5x20
MT18	9.5x150	3/8x6	637	5	60	5x20
MT19	9.5x200	3/8x8	852	5	50	5x20
MT20	9.5x250	3/8x10	1064	5	30	5x20
MT21	9.5x300	3/8x12	1276	5	30	5x20
MT22	9.5x375	3/8x15	1665	3	36	5x20
MT23	9.5x450	3/8x18	1999	3	36	5x20



**BRASS TOWER BOLT**  
10 mm

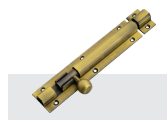
**MATAKA**

CODE No.	SIZE MM	SIZE INCHES	MRP S\$/ABM	MRP Z.BLACK	MRP PVD	PCS/ BOX	PCS/ CASE	SCREW SIZE
MT1	10x100	4	516	552	765	5	100	5x25
MT2	10x150	6	771	825	1144	5	60	5x25
MT3	10x200	8	1029	1103	1527	5	50	5x25
MT4	10x250	10	1287	1377	1909	5	30	5x25
MT5	10x300	12	1545	1663	2292	5	30	5x25
MT6	10x375	15	2016	2197	2980	3	36	5x25
MT7	10x450	18	2487	2596	3579	3	36	5x25
MT8	10x600	24	3224	3460	4776	3	36	5x25
MT9	10x750	30	4037	4320	5976	3	24	5x25



**BULLET**

CODE No.	SIZE MM	SIZE INCHES	MRP S\$/ABM	MRP Z.BLACK	MRP PVD	PCS/ BOX	PCS/ CASE	SCREW SIZE
MT81	10x100	4	516	5	100	5x25		
MT82	10x150	6	771	5	60	5x25		
MT83	10x200	8	1029	5	50	5x25		
MT84	10x250	10	1287	5	30	5x25		
MT85	10x300	12	1545	5	30	5x25		
MT86	10x375	15	2016	3	36	5x25		
MT87	10x450	18	2487	3	36	5x25		
MT88	10x600	24	3224	3	36	5x25		



**SQUARE**

CODE No.	SIZE MM	SIZE INCHES	MRP S\$/ABM	MRP Z.BLACK	MRP PVD	PCS/ BOX	PCS/ CASE	SCREW SIZE
ST127	10x100	4	484	5	100	-	-	-
ST128	10x150	6	703	5	60	-	-	-
ST129	10x200	8	943	5	50	-	-	-
ST130	10x250	10	1209	5	30	-	-	-
ST131	10x300	12	1411	5	30	-	-	-
ST132	10x375	15	1850	3	36	-	-	-
ST133	10x450	18	2215	3	36	-	-	-
ST134	10x600	24	2944	3	36	-	-	-





**BRASS TOWER BOLT  
1/2 (Dia. 12 mm)**

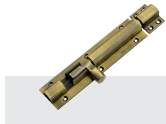
**ROUND**

CODE No.	SIZE MM	SIZE INCHES	MRP \$\$/ABM	PCS / BOX	PCS / CASE	SCREW SIZE
OT1	12x100	1/2x4	617	5	100	6x25
OT2	12x150	1/2x6	927	5	60	6x25
OT3	12x200	1/2x8	1237	5	50	6x25
OT4	12x250	1/2x10	1545	5	30	6x25
OT5	12x300	1/2x12	1855	5	30	6x25
OT6	12x375	1/2x15	2419	3	36	6x25
OT7	12x450	1/2x18	2903	3	36	6x25
OT8	12x600	1/2x24	3871	3	36	6x25
OT9	12x750	1/2x30	4838	3	24	6x25



**HEX**

CODE No.	SIZE MM	SIZE INCHES	MRP \$\$/ABM	PCS / BOX	PCS / CASE	SCREW SIZE
OTH1	12x100	1/2x4	613	5	100	6x25
OTH2	12x150	1/2x6	921	5	60	6x25
OTH3	12x200	1/2x8	1229	5	50	6x25
OTH4	12x250	1/2x10	1534	5	30	6x25
OTH5	12x300	1/2x12	1842	5	30	6x25
OTH6	12x375	1/2x15	2402	3	36	6x25
OTH7	12x450	1/2x18	2883	3	36	6x25
OTH8	12x600	1/2x24	3843	3	36	6x25



**BULLET**

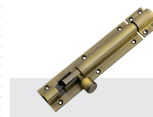
CODE No.	SIZE MM	SIZE INCHES	MRP \$\$/ABM	PCS / BOX	PCS / CASE	SCREW SIZE
OT11	12x100	1/2x4	672	5	100	6x25
OT12	12x150	1/2x6	1008	5	60	6x25
OT13	12x200	1/2x8	1343	5	50	6x25
OT14	12x250	1/2x10	1679	5	30	6x25
OT15	12x300	1/2x12	2015	5	30	6x25
OT16	12x375	1/2x15	2630	3	36	6x25
OT17	12x450	1/2x18	3154	3	36	6x25
OT18	12x600	1/2x24	4206	3	36	6x25
OT19	12x750	1/2x30	5476	3	24	6x25
OT20	12x900	1/2x36	6911	3	24	6x25
OT21	12x1050	1/2x42	7866	3	12	6x25
OT22	12x1200	1/2x48	8762	3	12	6x25



**BRASS TOWER BOLT  
5/8 (Dia. 15 mm)**

**ROUND**

CODE No.	SIZE MM	SIZE INCHES	MRP \$\$/ABM	PCS / BOX	PCS / CASE	SCREW SIZE
PT1	15x100	5/8x4	1422	2	8x30	
PT2	15x150	5/8x6	2029	2	8x30	
PT3	15x200	5/8x8	2706	2	8x30	
PT4	15x250	5/8x10	3381	2	8x30	
PT5	15x300	5/8x12	4054	2	8x30	
PT6	15x375	5/8x15	5292	1	8x30	
PT7	15x450	5/8x18	6352	1	8x30	
PT8	15x600	5/8x24	8469	1	8x30	
PT9	15x750	5/8x30	11013	1	8x30	
PT10	15x900	5/8x36	14214	1	8x30	
PT11	15x1050	5/8x42	16274	1	8x30	
PT12	15x1200	5/8x48	19056	1	8x30	
PT13	15x1350	5/8x54	24467	1	8x30	
PT14	15x1500	5/8x60	31760	1	8x30	



**BRASS TOWER BOLT  
CRUZ**

CODE No.	SIZE MM	SIZE INCHES	MRP \$\$/ABM	PCS / BOX	PCS / CASE	SCREW SIZE
ST48	100	4	387	5	100	6x20
ST49	150	6	578	5	60	6x20
ST50	200	8	771	5	50	6x20
ST51	250	10	964	5	30	6x20
ST52	300	12	1156	5	30	6x20



**BRASS TOWER BOLT  
MEXICO NX**

CODE No.	SIZE MM	SIZE INCHES	MRP \$\$/ABM	PCS / BOX	PCS / CASE	SCREW SIZE
ST64	75	3	309	10	120	5x20
ST65	100	4	409	5	100	5x20
ST66	150	6	613	5	60	5x20
ST67	200	8	817	5	30	5x20
ST68	250	10	1022	5	30	5x20
ST69	300	12	1226	5	30	5x20





**BRASS TOWER BOLT  
TAPPER 9.5 mm**

CODE No.	SIZE MM	SIZE INCHES	MRP SS/ARM	MRP Z.BLACK	MRP PVD	PCS / BOX	SCREW CASE SIZE
ST83	100	4	672	719	911	5	100 6x20
ST84	150	6	1008	1070	1370	5	60 6x20
ST85	200	8	1343	1437	1827	5	50 6x20
ST86	250	10	1679	1797	2283	5	30 6x20
ST87	300	12	2015	2166	2740	5	30 6x20
ST88	375	15	2523	2700	3458	3	36 6x20
ST89	450	18	3154	3375	4281	3	36 6x20
ST90	600	24	4206	4500	5700	3	36 6x20
ST136	750	30	5237	5425	7135	3	36 6x20

**BRASS TOWER BOLT  
TAPPER NX 8 mm**



CODE No.	SIZE MM	SIZE INCHES	MRP SS/ARM	PCS / BOX	PCS / CASE	SCREW SIZE
ST155	75	3	206	10	100	5x20
ST78	100	4	281	5	100	5x20
ST79	150	6	372	5	60	5x20
ST80	200	8	463	5	30	5x20
ST81	250	10	553	5	30	5x20
ST82	300	12	644	5	30	5x20



BRINGING TO LIFE A TIMELESS CREATION THAT IS SUFFICED WITH MODERNITY AND VERSATILITY.

**BRASS TOWER BOLT  
TAPPER 12 mm**

CODE No.	SIZE MM	SIZE INCHES	MRP SS/ARM	PCS / BOX	SCREW SIZE
ST108	150	6	1892	3	7x30
ST104	200	8	2523	3	7x30
ST107	250	10	3143	3	7x30
ST106	300	12	3783	3	7x30
ST109	400	16	5271	1	7x30
ST111	600	24	7895	1	7x30
ST112	750	30	10619	1	7x30
ST137	900	36	13823	1	7x30
ST114	1200	48	18339	1	7x30







BUILT TO PERFECTION, IT IS COMPRISED OF EXEMPLARY FINISH AND STRENGTH.

#### BRASS TOWER BOLT NECK



CODE No.	SIZE MM	SIZE INCHES	MMP SC/ABM	PCS / BOX	PCS / CASE	SCREW SIZE
ST91	75	3	323	10	120	5x20
ST92	100	4	428	5	100	5x20
ST93	150	6	642	5	60	5x20
ST94	200	8	856	5	30	5x20
ST95	250	10	1071	5	30	5x20
ST96	300	12	1285	5	30	5x20
ST97	375	15	1677	3	36	5x20
ST98	450	18	2011	3	36	5x20
ST99	600	24	2681	3	36	5x20
ST118	750	30	3481	3	36	5x20

#### BRASS TOWER BOLT TAPPER NECK



CODE No.	SIZE MM	SIZE INCHES	MMP SC/ABM	PCS / BOX	PCS / CASE	SCREW SIZE
ST116	75	3	500	10	120	6x20
ST117	100	4	670	5	100	6x20
ST118	150	6	1006	5	60	6x20
ST119	200	8	1339	5	30	6x20
ST120	250	10	1675	5	30	6x20
ST121	300	12	2011	5	30	6x20
ST122	375	15	2621	3	36	6x20
ST123	450	18	3148	3	36	6x20
ST124	600	24	4198	3	36	6x20

#### BRASS TOWER BOLT SUPER NECK



CODE No.	SIZE MM	SIZE INCHES	MMP SC/ABM	PCS / BOX	PCS / CASE	SCREW SIZE
ST139	75	3	420	10	120	-
ST140	100	4	560	5	100	-
ST141	150	6	840	5	60	-
ST142	200	8	1120	5	30	-
ST143	250	10	1399	5	30	-
ST144	300	12	1679	5	30	-
ST145	375	15	2190	3	36	-
ST146	450	18	2628	3	36	-
ST147	600	24	3505	3	36	-



**BRASS TOWER BOLT ROYAL**

CODE No.	SIZE MM	SIZE INCHES	MRP \$\$/ABM	PCS / BOX	PCS / CASE	SCREW SIZE
ST17	100	4	583	5	100	6/32
ST18	150	6	873	5	60	6/32
ST19	200	8	1163	5	50	6/32
ST20	250	10	1466	5	30	6/32
ST21	300	12	1746	5	30	6/32



**BRASS TOWER BOLT CAPSUL**

CODE No.	SIZE MM	SIZE INCHES	MRP \$\$/ABM	PCS / BOX	PCS / CASE	SCREW SIZE
ST01	100	4	637	5	100	6/32
ST02	150	6	957	5	60	6/32
ST03	200	8	1276	5	50	6/32
ST04	250	10	1593	5	30	6/32
ST05	300	12	1913	5	30	6/32
ST06	375	15	2495	3	36	6/32
ST07	450	18	2994	3	36	6/32
ST08	600	24	3952	3	36	6/32



**BRASS TOWER BOLT FLUSH**

CODE No.	SIZE MM	SIZE INCHES	MRP \$\$/ABM	PCS / BOX	PCS / CASE	SCREW SIZE
ST23	100	4	257	5	100	6/32
ST24	150	6	385	5	60	6/32
ST27	200	8	508	5	50	6/32
ST28	250	10	637	5	30	6/32
ST29	300	12	764	5	30	6/32
ST30	375	15	1017	3	36	6/32
ST31	450	18	1223	3	36	6/32
ST32	600	24	1655	3	36	6/32
ST33	750	30	2059	3	36	6/32

**BRASS CAM BOLT**



CODE No.	SIZE MM	SIZE INCHES	MRP \$\$/ABM	PAIR / BOX	PAIR / CASE	SCREW SIZE
ST100	SMALL 40MM	SMALL 40MM	565	10	120	5/20



**BRASS BABY LATCH**

**SQUARE**

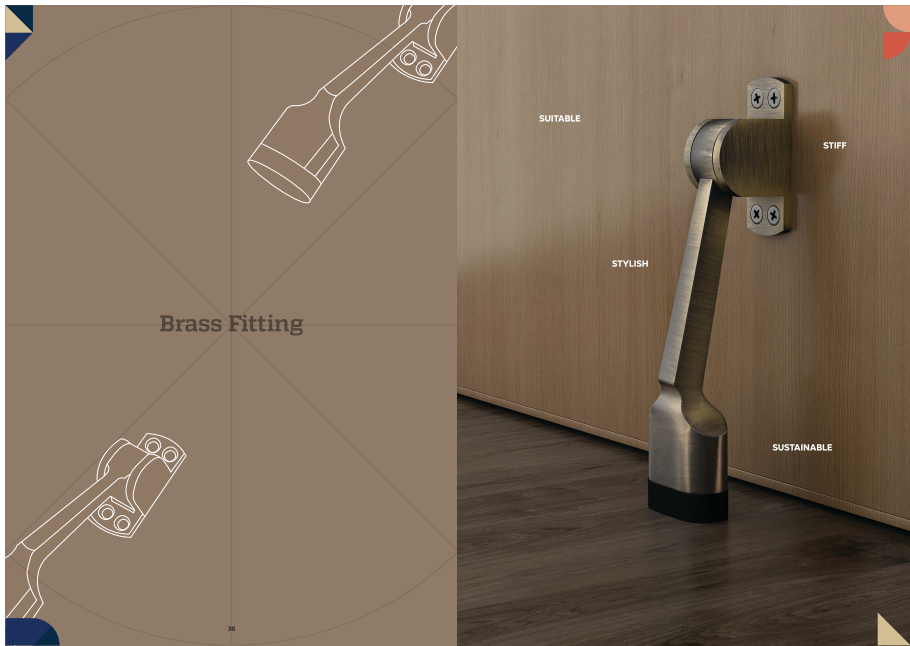
CODE No.	SIZE MM	SIZE INCHES	MRP \$\$/ABM	PCS / BOX	PCS / CASE	SCREW SIZE
TB01	Square x 75	3	875	5	60	5/25



**ZEN**

CODE No.	SIZE MM	SIZE INCHES	MRP \$\$/ABM	MRP Z-BLACK	MRP PVD	PCS / BOX	PCS / CASE	SCREW SIZE
TB03	Zen x 15	3	276	295	447	10	120	5/20
TB04	Zen x 100	4	409	437	639	5	100	5/20







**BRASS  
DOOR STOPPER**

**JORJAN**

CODE No.	ITEM TYPE	SIZE INCHES	MRP SS/ARM	MRP Z.BLACK	MRP PVO	PCS / BOX	PCS / CASE	SCREW SIZE
UD02	Jorjan	5	741		5	60	7x25	

**MEXICO**

CODE No.	ITEM TYPE	SIZE INCHES	MRP SS/ARM	MRP Z.BLACK	MRP PVO	PCS / BOX	PCS / CASE	SCREW SIZE
UD03	Mexico	5	706	755	993	5	60	7x25

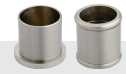
**BRASS  
DOOR CHAIN**

CODE No.	SIZE MM	SIZE INCHES	MRP SS/ARM	PCS / BOX	SCREW SIZE
UD01	200	8	800	5	7x25



**BRASS  
BEARING PIVOT**

CODE No.	SIZE MM	SIZE INCHES	MRP SS	PCS / BOX	PCS / CASE	SCREW SIZE
UB01	Regular x 100	4	1236	5	60	8x30



PLAIN THREE PCS

**BRASS  
CONCEAL**

CODE No.	ITEM TYPE	SIZE INCHES	MRP SS/ARM	PCS / BOX	PCS / CASE	SCREW SIZE
UPC01	PLAIN	3/16x1	144	40	6x25	
UPC02	PLAIN	1x1	181	40	6x25	
UPC03	THREE PCS	1x1 1/2	167	40	6x25	

**BRASS  
WINDOW STAY**

**"ADJUSTABLE"**

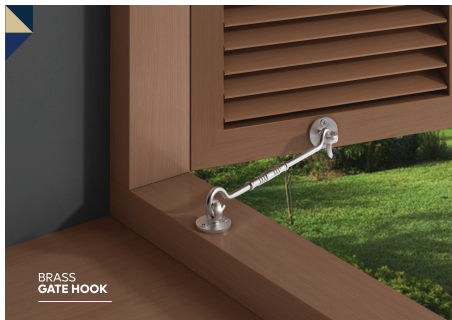
CODE No.	SIZE MM	SIZE INCHES	MRP SS/ARM	PCS / BOX	PCS / CASE	SCREW SIZE
UW01	Regular x 150	6	1012	10	120	6x25

**"DELUX"**

CODE No.	SIZE MM	SIZE INCHES	MRP SS/ARM	PCS / BOX	PCS / CASE	SCREW SIZE
UW02	150	6	394	10	120	6x25

**"SOLID"**

CODE No.	SIZE MM	SIZE INCHES	MRP SS/ARM	PCS / BOX	PCS / CASE	SCREW SIZE
UW03	150	6	580	10	120	6x25
UW04	200	8	781	10	120	6x25



BRASS  
GATE HOOK



**HEAVY**

CODE No.	SIZE MM	SIZE INCHES	MRP SS/ARM	PCS / BOX	PCS / CASE	SCREW SIZE
UG16	50	2	174	20	240	6x20
UG17	62	2.1/2	174	20	240	6x20
UG18	75	3	176	20	240	6x20
UG19	100	4	176	20	240	6x20
UG24	125	5	179	10	200	6x20
UG25	150	6	182	10	200	6x20

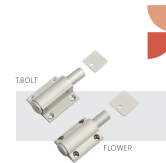


**FANCY**

CODE No.	SIZE MM	SIZE INCHES	MRP SS/ARM	PCS / BOX	PCS / CASE	SCREW SIZE
UG18	62	2.1/2	204	20	240	6x20
UG16	100	4	204	20	240	6x20
UG17	125	5	207	10	200	6x20
UG18	150	6	215	10	200	6x20
UG19	200	8	215	10	200	6x20

**BRASS  
PUSH MAGNET**

CODE No.	ITEM TYPE	MRP SS/ARM	PCS / BOX	PCS / CASE	SCREW SIZE
UP01	T-Bolt Type	199	20	240	5x20
UP02	Flower Type	251	20	240	5x20



T-BOLT

FLOWER

**BRASS  
DOOR EYE**

CODE No.	SIZE MM	SIZE INCHES	MRP SS/ARM	PCS / BOX	PCS / CASE
UE11	50	2 (Round)	218	12	144
UE13	50	2 (Square)	269	12	144





### BRASS ALDROPS



#### JORJAN

CODE No.	SIZE MM	SIZE INCHES	MRP \$S/ABM
VA01	16x200 (2+1)	5/8x8	2956
VA02	16x200 (2+1)	5/8x10	3202
VA03	16x200 (2+1)	5/8x12	3847
VA04	16x200 (2+1)	5/8x14	4091
VA07	19x250 (2+1)	3/4x10	6087
VA08	19x200 (2+1)	3/4x12	4419
VA09	19x250 (2+1)	3/4x14	6707
VA10	19x400 (2+1)	3/4x16	7233
VA11	19x400 (2+1)	2 1/4x16	7696
VA17	25x400 (2+1)	1 1/8	21932
VA18	25x400 (2+1)	1 1/8	21919
VA19	25x500 (2+1)	1 1/8	22432
VA20	25x500 (2+1)	1 1/2	24864
VA21	-	1/2 Extra Clip	23770
VA28	-	5/8 Extra Clip	417
VA29	-	5/8 Extra Lock	417
VA30	-	3/4 Extra Clip	729
VA31	-	3/4 Extra Lock	642
VA32	-	1 Extra Clip	2474
VA33	-	1 Extra Lock	2474

#### PLUS

CODE No.	SIZE MM	SIZE INCHES	MRP \$S/ABM
VA34	12x100 (2+1)	1/2x4	1710
VA35	12x200 (2+1)	1/2x8	1877
VA36	16x200 (2+1)	5/8x8	2246
VA37	16x200 (2+1)	5/8x10	2637
VA38	16x200 (2+1)	5/8x12	3113
VA43	-	1/2 Extra Clip	227
VA44	-	1/2 Extra Lock	227
VA42	-	5/8 Extra Clip	225
VA43	-	5/8 Extra Lock	273

### BRASS TADI



CODE No.	SIZE MM	SIZE INCHES	MRP \$S/ABM
VL01	12x200	1/2x8	1672
VL02	12x200	1/2x10	1824
VL03	12x300	1/2x12	1987

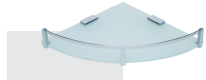


### BRASS JULLA FITTING



CODE No.	NAME	MRP \$S/ABM
VJ01	Bearing Sling Kadi Fanky (2 Pcs)	4827
VJ02	Bottom Kadi (4 Pcs)	4089
VJ03	S Hook (2 Pcs)	963
VJ04	Julia Chain Jogan	423

### BRASS CORNER 6 mm



CODE No.	SIZE INCHES	MRP CP	PCS / BOX	PCS / CARTOON
MBA001	6x8	1476	1	12
MBA002	8x10	1937	1	12
MBA003	12x12	1660	1	12

### BRASS SELF 6 mm



CODE No.	SIZE INCHES	MRP CP	PCS / BOX	PCS / CARTOON
MBA007	5.5x12	1734	1	12
MBA008	5.5x15	1826	1	12
MBA009	5.5x18	1919	1	12

**BRASS  
KHUTI**



**OVEL**

CODE No.	SIZE IN POINT	MRP CP	PCS / BOX	SCREW SIZE
VK36	2	310	10	6x30
VK37	3	459	10	6x30
VK38	4	608	10	6x30
VK39	5	758	10	6x30
VK40	6	907	10	6x30



**VOLVO**

CODE No.	SIZE IN POINT	MRP CP	PCS / BOX	SCREW SIZE
VK22	2	310	10	6x30
VK23	3	459	10	6x30
VK24	4	608	10	6x30
VK25	5	758	10	6x30
VK26	6	907	10	6x30



**PIANO**

CODE No.	SIZE IN POINT	MRP CP	PCS / BOX	SCREW SIZE
VK15	2	310	10	6x30
VK16	3	459	10	6x30
VK17	4	608	10	6x30
VK18	5	758	10	6x30
VK19	6	907	10	6x30



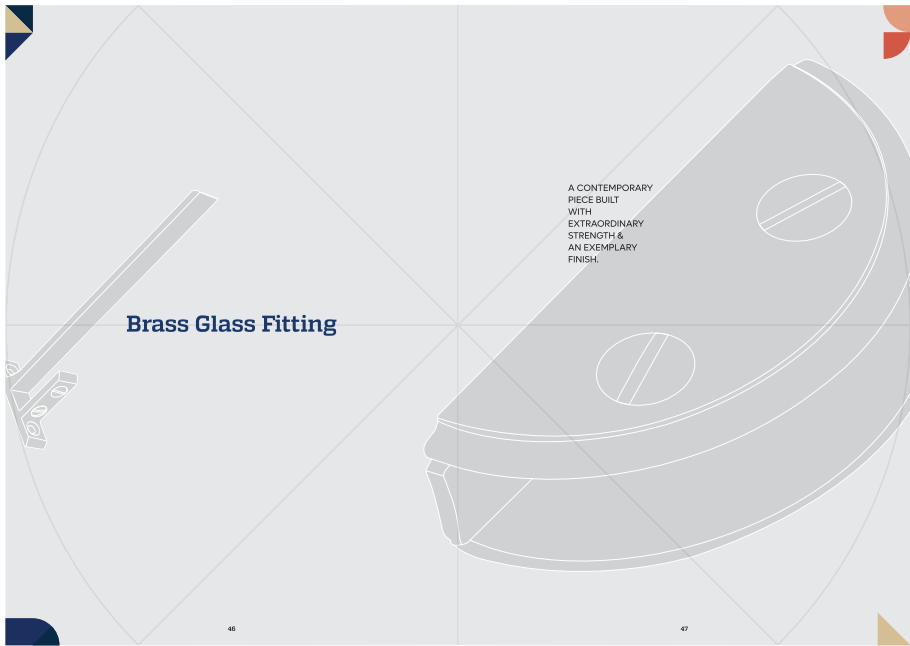
**KAJU**

CODE No.	SIZE IN POINT	MRP CP	PCS / BOX	SCREW SIZE
VK01	2	310	10	6x30
VK02	3	459	10	6x30
VK03	4	608	10	6x30
VK04	5	758	10	6x30
VK05	6	907	10	6x30



**SQUARE**

CODE No.	SIZE IN POINT	MRP CP	PCS / BOX	SCREW SIZE
VK43	2	389	10	6x30
VK44	3	549	10	6x30
VK45	4	728	10	6x30
VK46	5	907	10	6x30
VK47	6	1086	10	6x30



## Brass Glass Fitting

A CONTEMPORARY  
PIECE BUILT  
WITH  
EXTRAORDINARY  
STRENGTH &  
AN EXEMPLARY  
FINISH.





**BRASS  
D BRACKET**

CODE No.	SIZE MM	SIZE INCHES	MRP ₹	PCL / BOX	SCREW SIZE
XD01	57x8	1 1/2x1/8mm	80	30	Sx25
XD02	57x8	1 1/2x1/8mm	86	30	Sx25
XD04	37x12	1 1/2x1/2mm	82	30	Sx25
XD05	50x6	2x1/8mm	112	15	Sx25
XD06	50x8	2x1/8mm	129	15	Sx25
XD08	50x12	2x1/2mm	144	15	Sx25



**BRASS  
F BRACKET**

CODE No.	SIZE MM	SIZE INCHES	MRP ₹	PCL / BOX	SCREW SIZE
XF03	57x8	3x1/8mm	133	20	7x30
XF04	75x12	3x1/2mm	143	20	7x30
XF05	100x8	4x1/8mm	174	20	7x30
XF06	100x12	4x1/2mm	174	20	7x30
XF07	150x6	6x1/8mm	270	10	7x30
XF08	150x8	6x1/8mm	270	10	7x30
XF09	150x12	6x1/2mm	270	10	7x30
XF10	200x8	8x1/8mm	396	10	7x30
XF11	200x12	8x1/2mm	396	10	7x30
XF12	250x8	10x1/8mm	571	10	7x30
XF13	250x12	10x1/2mm	571	10	7x30
XF14	300x8	12x1/8mm	698	10	7x30
XF15	300x12	12x1/2mm	698	10	7x30



**BRASS  
SQUARE BRACKET**

CODE No.	SIZE MM	SIZE INCHES	MRP ₹	PCL / BOX	SCREW SIZE
XS01	50x25x8	2x1x1/8mm	111	20	Sx25
XS02	50x25x8	2x1x1/8mm	112	20	Sx25
XS03	50x25x12	2x1x1/2mm	273	20	Sx25

**BRASS  
MIRROR SCREW**



CODE No.	SIZE MM	SIZE INCHES	MRP CP	GROSS/ BOX
XM01	12	1/2"	840	2
XM02	15	5/8"	840	2
XM03	25	1"	862	2
XM04	31	1 1/4"	884	2
XM05	38	1 1/2"	907	1
XM06	50	2"	981	1
XM07	62	2 1/2"	1096	1
XM08	75	3"	1198	1

**BRASS  
MIRROR CAP**



**"ROUND FLAT"**

CODE No.	SIZE MM	SIZE INCHES	MRP ₹/ABM	PCL / BOX	SCREW SIZE
YC01	15MM	1/2"	21	200	7x20
YC02	15MM	5/8"	26	200	7x20
YC03	19MM	3/4"	28	200	7x20
YC04	25MM	1"	42	100	7x20
YC05	31MM	1 1/4"	63	100	7x20
YC06	38MM	1 1/2"	79	50	7x20
YC07	50MM	2"	151	50	7x20
YC08	63MM	2 1/2"	314	20	7x20
YC09	75MM	3"	460	20	7x20

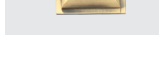
**"SQUARE"**

CODE No.	SIZE MM	SIZE INCHES	MRP ₹/ABM	PCL / BOX	SCREW SIZE
YC10	15MM	1/2"	27	200	7x20
YC11	19MM	3/4"	42	200	7x20
YC12	25MM	1"	62	100	7x20
YC13	31MM	1 1/4"	100	50	7x20
YC14	38MM	1 1/2"	151	50	7x20
YC15	50MM	2"	279	30	7x20
YC16	63MM	2 1/2"	566	30	7x20
YC17	75MM	3"	651	20	7x20



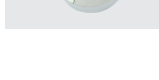
**"DOOMS"**

CODE No.	SIZE MM	SIZE INCHES	MRP SS/ARM	PCS / BOX	SCREW SIZE
YC00	15MM	5/8"	41	200	7/20
YC01	19MM	3/4"	55	200	7/20
YC42	25MM	1"	83	100	7/20
YC03	38MM	1.5/2"	137	40	7/20
YC44	50MM	2"	136	20	7/20



**"ROYAL PYRAMID"**

CODE No.	SIZE MM	SIZE INCHES	MRP SS/ARM	PCS / BOX	SCREW SIZE
YC45	25MM	1"	119	50	7/20
YC46	31MM	1.1/4"	136	50	7/20
YC47	38MM	1.5/2"	205	30	7/20
YC48	50MM	2"	339	10	7/20
YC49	63MM	2.5/2"	747	5	7/20
YC50	75MM	3"	1081	5	7/20
YC51	100MM	4"	2224	2	7/20



**"CRYSTAL"**

CODE No.	SIZE MM	SIZE INCHES	MRP CP	PCS / BOX	SCREW SIZE
YC32	15MM	1/2"	39	200	7/20
YC33	19MM	3/4"	62	50	7/20
YC34	25MM	1"	85	50	7/20
YC35	31MM	1.1/4"	167	20	7/20
YC36	38MM	1.5/2"	241	8	7/20



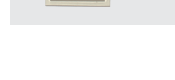
**"SWASTIK"**

CODE No.	SIZE MM	SIZE INCHES	MRP SS/ARM	PCS / BOX	SCREW SIZE
YC17	25MM	1"	86	100	7/20
YC38	31MM	1.1/4"	130	50	7/20
YC39	38MM	1.5/2"	170	50	7/20
YC50	50MM	2"	300	30	7/20
YC61	63MM	2.5/2"	494	30	7/20
YC62	75MM	3"	694	20	7/20



**"PYRAMID"**

CODE No.	SIZE MM	SIZE INCHES	MRP SS/ARM	PCS / BOX	SCREW SIZE
VC19	19MM	3/4"	37	200	7/20
VC20	25MM	1"	55	100	7/20
VC21	31MM	1.1/4"	101	50	7/20
VC22	38MM	1.5/2"	141	50	7/20
VC23	50MM	2"	300	30	7/20
VC24	63MM	2.5/2"	531	20	7/20
VC25	75MM	3"	689	10	7/20
VC26	100MM	4"	1382	5	7/20



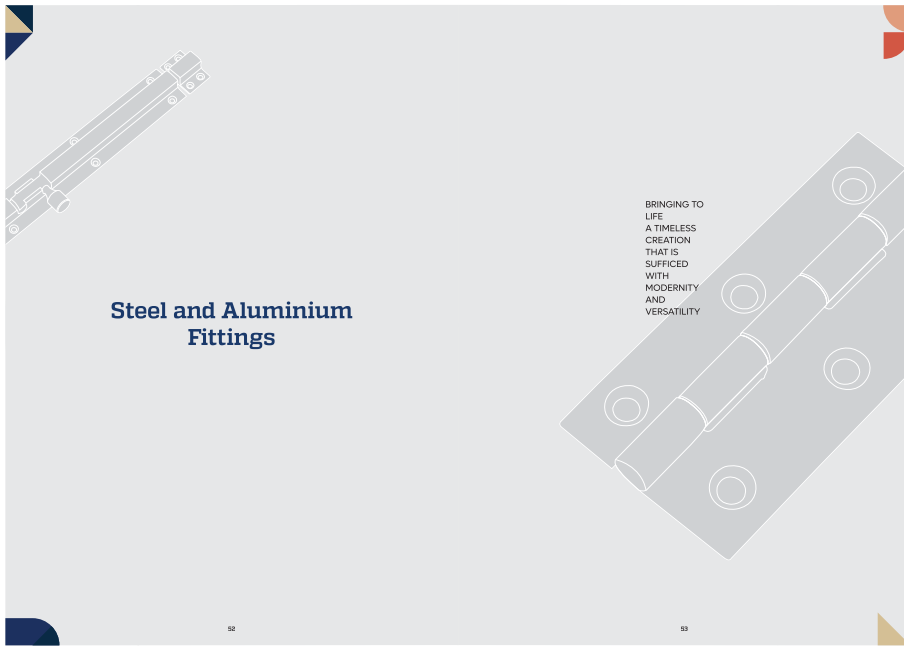
**"ROYAL"**

CODE No.	SIZE MM	SIZE INCHES	MRP SS/ARM	PCS / BOX	SCREW SIZE
VC27	19MM	3/8"	80	50	7/20
VC28	25MM	1"	95	50	7/20
VC29	31MM	1.1/4"	121	50	7/20
VC20	38MM	1.5/2"	163	20	7/20
VC31	50MM	2"	351	20	7/20
VC32	63MM	2.5/2"	662	10	7/20
VC33	75MM	3"	1016	5	7/20



**"DOME"**

CODE No.	SIZE MM	SIZE INCHES	MRP SS/ARM	PCS / BOX	SCREW SIZE
VC34	15MM	1/2"	23	200	7/20
VC35	19MM	3/4"	33	200	7/20
VC36	25MM	1"	48	100	7/20
VC37	31MM	1.1/4"	85	50	7/20
VC38	38MM	1.5/2"	114	50	7/20
VC39	50MM	2"	254	20	7/20



## Steel and Aluminium Fittings

BRINGING TO LIFE  
A TIMELESS  
CREATION  
THAT IS  
SUFFICED  
WITH  
MODERNITY  
AND  
VERSATILITY



CODE No.	SIZE	MRP ₹	MRP ABA/BCM	PCS / BOX	PCS / CASE	SCREW SIZE
SHM43	3x10x3/4	48	59	50	1000	6x20
SHM41	3x10x3/4	53	63	40	960	6x20
SHM42	3x10x1	53	63	40	960	6x20
SHM41	3x10x1	59	71	40	960	6x20
SHM40	3x1x1	83	100	30	720	7x20
SHM06	3x16	59	72	40	960	6x20
SHM07	3x14	63	77	30	720	7x20
SHM08	4x14	102	128	25	375	7x25
SHM09	3x14	129	166	20	300	7x30
SHM14	3x12	95	117	20	480	7x25
SHM15	4x12	129	166	20	300	8x30
SHM16	5x12	159	200	15	225	8x30
SHM17	6x12	217	272	10	150	8x30
SHM18	5x10	241	307	12	180	8x35
SHM19	6x10	278	356	10	150	8x35
SHM44	4" Stone Hinges	112	142	25	375	-

### STEEL TOWER BOLT Dia. 10 mm



CODE No.	SIZE MM	SIZE INCHES	MRP ₹	MRP ABA/ BCM	PCS / BOX	PCS / CASE	SCREW SIZE
STM02	100	4	104	132	10	240	6x20
STM03	150	6	153	194	10	200	6x20
STM04	200	8	201	256	10	160	6x20
STM02	250	10	243	311	10	120	6x20
STM03	300	12	291	371	10	120	6x20



CODE No.	SIZE MM	SIZE INCHES	MRP ₹	MRP ABA/ BCM	PCS / BOX	PCS / CASE	SCREW SIZE
STM36	100	4	104	132	10	240	6x20
STM37	150	6	154	195	10	200	6x20
STM38	200	8	205	261	10	160	6x20
STM44	250	10	252	320	10	120	6x20
STM45	300	12	302	382	10	120	6x20

### STEEL TOWER BOLT Dia. 12 mm



CODE No.	SIZE MM	SIZE INCHES	MRP ₹	MRP ABA/ BCM	PCS / BOX	PCS / CASE	SCREW SIZE
STM13	100	4	162	189	10	240	6x25
STM14	150	6	228	269	10	200	6x25
STM15	200	8	302	357	10	160	6x25
STM46	250	10	359	428	10	120	6x25
STM47	300	12	410	492	10	120	6x25



CODE No.	SIZE MM	SIZE INCHES	MRP ₹	MRP ABA/ BCM	PCS / BOX	PCS / CASE	SCREW SIZE
STM39	100	4	162	190	10	240	6x25
STM40	150	6	228	270	10	200	6x25
STM48	200	8	302	362	10	160	6x25
STM48	250	10	359	430	10	120	6x25
STM49	300	12	410	495	10	120	6x25



### STEEL TOWER BOLT NECK

CODE No.	SIZE MM	SIZE INCHES	SS	MRP	MRP /ZB	MRP /BOX	PCS / CASE	PCS / CASE	SCREW SIZE
STM18	100	4	140	168	10	240	5	240	6x20
STM19	150	6	207	248	10	200	5	200	6x20
STM20	200	8	279	328	10	160	5	160	6x20
STM30	250	10	341	410	10	120	5	120	6x20
STM51	300	12	388	470	10	120	5	120	6x20

### TOWER BOLT ALUMINIUM

#### "TAPPER" 9.5mm



CODE No.	SIZE MM	SIZE INCHES	SS	MRP	MRP /ZB	MRP /BOX	PCS / CASE	PCS / CASE	SCREW SIZE
MAT01	100	4	162	182	203	5	240	5	240
MAT02	150	6	228	256	289	5	200	5	200
MAT03	200	8	287	332	368	5	160	5	160
MAT04	250	10	359	400	440	5	120	5	120
MAT05	300	12	431	479	532	5	80	5	80
MAT06	450	18	679	697	821	5	36	5	36
MAT08	600	24	829	924	1092	5	36	5	36

#### "TAPPER NX" 8mm



CODE No.	SIZE MM	SIZE INCHES	SS	MRP	MRP /ZB	MRP /BOX	PCS / CASE	PCS / CASE	SCREW SIZE
MAT08	100	4	133	158	5	240	5	240	6x20
MAT10	150	6	185	212	5	200	5	200	6x20
MAT11	200	8	244	279	5	160	5	160	6x20
MAT13	300	12	366	414	5	80	5	80	6x20



#### "MAXICO"

CODE No.	SIZE MM	SIZE INCHES	SS	MRP	MRP /ZB	MRP /BOX	PCS / CASE	PCS / CASE	SCREW SIZE
MAT17	100	4	162	182	5	240	5	240	6x20
MAT18	150	6	228	256	5	200	5	200	6x20
MAT19	200	8	287	332	5	160	5	160	6x20
MAT21	300	12	431	479	5	80	5	80	6x20

#### "10MM"



CODE No.	SIZE MM	SIZE INCHES	SS	MRP	MRP /ZB	MRP /BOX	PCS / CASE	PCS / CASE	SCREW SIZE
MAT25	100	4	162	182	200	5	240	5	240
MAT26	150	6	228	256	289	5	200	5	200
MAT27	200	8	287	332	368	5	160	5	160
MAT28	250	10	356	397	456	5	80	5	80
MAT29	300	12	431	479	532	5	80	5	80
MAT31	450	18	623	697	821	5	36	5	36
MAT32	600	24	829	924	1092	5	36	5	36

#### "12MM"



CODE No.	SIZE MM	SIZE INCHES	SS	MRP	MRP /ZB	MRP /BOX	PCS / CASE	PCS / CASE	SCREW SIZE
MAT33	100	4	133	204	5	240	5	240	6x25
MAT34	150	6	206	293	5	200	5	200	6x25
MAT35	200	8	352	386	5	160	5	160	6x25
MAT36	250	10	440	481	5	80	5	80	6x25
MAT37	300	12	528	576	5	80	5	80	6x25
MAT39	450	18	798	871	5	36	5	36	6x25
MAT40	600	24	1061	1157	5	36	5	36	6x25

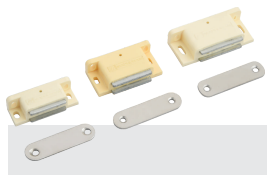
#### "SUPER NACK"



CODE No.	SIZE MM	SIZE INCHES	SS	MRP	MRP /ZB	MRP /BOX	PCS / CASE	PCS / CASE	SCREW SIZE
MAT43	100	4	160	189	5	240	5	240	6x25
MAT44	150	6	239	266	5	200	5	200	6x25
MAT45	200	8	309	343	5	160	5	160	6x25
MAT46	250	10	386	427	5	80	5	80	6x25
MAT47	300	12	464	511	5	80	5	80	6x25
MAT48	450	18	676	749	5	36	5	36	6x25
MAT49	600	24	898	994	5	36	5	36	6x25



### MAGNETIC DOOR CATCHER



#### M TYPE

CODE No.	ITEM	SIZE INCHES	MRP IVORY	PCS / BOX	PCS / CASE
MDC1	M-ND1	SMALL 21	60	60	600
MDC2	M-ND2	MEDIUM 25	50	50	500
MDC3	M-ND3	LARGE 28	40	40	400



#### D TYPE

CODE No.	ITEM	SIZE INCHES	MRP WHITE	PCS / BOX	PCS / CASE
MDC4	D-ND1	SMALL 21	60	60	600
MDC5	D-ND2	MEDIUM 25	50	50	500
MDC6	D-ND3	LARGE 28	40	40	400



#### Exclusive Packaging

- All the Madhuram Packaging is crafted with durable material for maximum protection.
- Its Design is Simple, Attractive and Easy to Communicate the products
- Madhuram Packaging with all the layers is Best in the Industry

#### Plating Quality

- Madhuram has the in-house plating plant so it controls all the quality checkpoints and that is its biggest strengths
- Madhuram uses the best raw material available for plating
- Madhuram works with Qualified & Skilled team to achieve the desired result

#### Plating Care

- Always protect your Hardware from sharp blows, scratching, chemicals.
- Hardware will age and tarnish naturally so if you want to keep your hardware in pristine condition, clean it regularly, with soft cloth dry or wet.
- Please note that usage of colour, oil or chemical may affect the plating of hardware, avoid using such while cleaning

